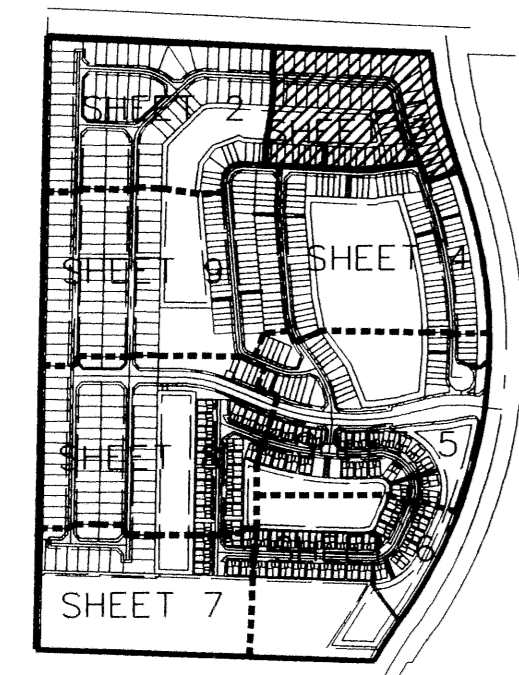
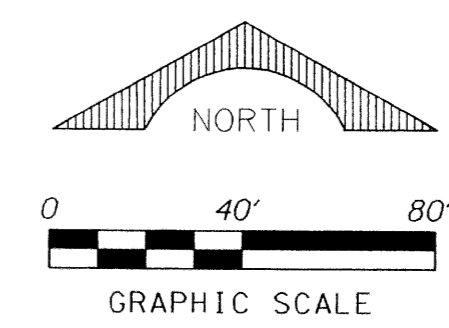
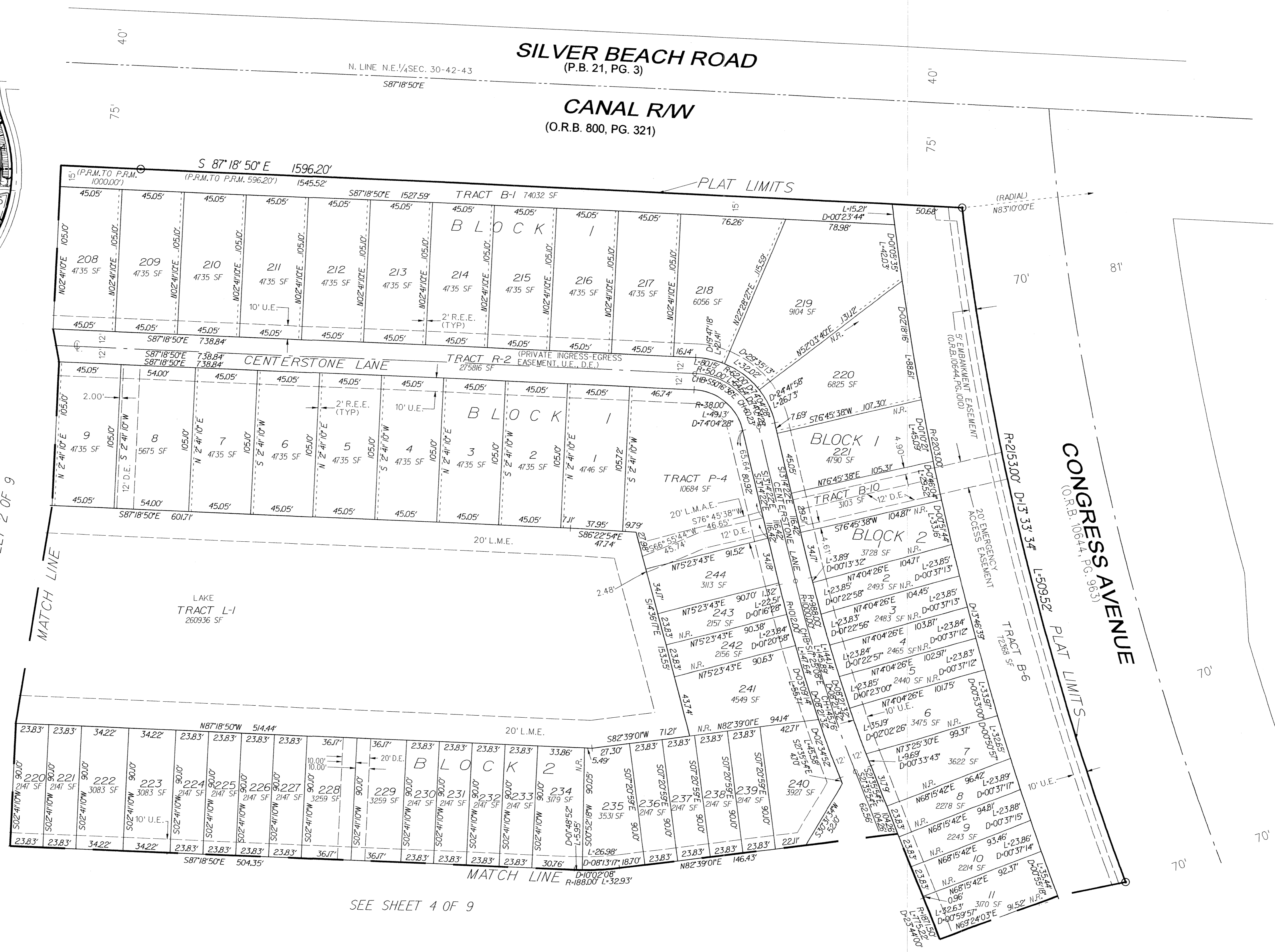


THOUSAND OAKS

A PORTION OF THE NORTHEAST ONE-QUARTER OF
 SECTION 30, TOWNSHIP 42 SOUTH, RANGE 43, EAST,
 CITY OF RIVIERA BEACH, PALM BEACH COUNTY, FLORIDA.



KEY MAP
NOT TO SCALE



- LEGEND:**
- ⊙ SET P.R.M. (UNLESS OTHERWISE NOTED)-4" DIAMETER BRASS DISK IN CONC. MON. STAMPED "LB7264 P.C.P."
 -
- ABBREVIATIONS:**
- CHB CHORD BEARING
 - CONC. CONCRETE
 - COR. CORNER
 - D.E. DELTA (CENTRAL ANGLE)
 - DRAIN. DRAINAGE EASEMENT
 - IRON ROD IRON ROD
 - I.R.C. IRON ROD AND CAP
 - L. ARCLength
 - L.B. LICENSED BUSINESS
 - L.S. LICENSED SURVEYOR
 - L.M.E. LAKE MAINTENANCE EASEMENT
 - L.M.A.E. LAKE MAINTENANCE ACCESS EASEMENT
 - L.W.D.D. LAKE WORTH DRAINAGE DISTRICT
 - MON. MONUMENT
 - O.R.B. OFFICIAL RECORDS BOOK
 - N.R. NON-RADIAL
 - P.B. PLAT BOOK
 - P.B.C.R. PALM BEACH COUNTY RECORDS
 - P.C. PAGE
 - P.C.P. PERMANENT CONTROL POINT
 - P.O.B. POINT OF BEGINNING
 - P.O.C. POINT OF COMMENCEMENT
 - P.R.M. PERMANENT REFERENCE MONUMENT
 - P.S.M. PROFESSIONAL SURVEYOR & MAPPER
 - P.U.D. PLANNED UNIT DEVELOPMENT
 - R. RADIAL
 - R.E.E. ROOF ENCROACHMENT EASEMENT
 - R/W RIGHT-OF-WAY
 - SEC. SECTION
 - SF. SQUARE FEET
 - S.F.W.M.D. SOUTH FLORIDA WATER MANAGEMENT DISTRICT
 - U.E. UTILITY EASEMENT